

Reception 2025 September Starters
Join our school community

Welcome to Lowercroft Primary School

- Introductions
- About Us
- Vision & Values – Personal Development supported by our Pupil Charter
- The Lowercroft Curriculum Offer
- Early Years Foundation Stage
- Next Steps
- Questions



Lowercroft Primary School

Why Lowercroft?

Our Approach:

Inclusive and holistic education

- Recognising each child's uniqueness
- Fostering good relationships based on trust
- Dedicated teaching and support staff
- Emphasis on personal development

Community & Communication:

Strong parent support body

- Open and honest communication
- Regular updates on pupil progress
- Opportunities for parent involvement
- Collaborative approach to education
- Building a supportive school community

Curriculum & Opportunities:

Progressive and rich curriculum

- Extra-curricular activities
- Emphasis on developing independence
- Encouraging curiosity and exploration
- Opportunities for personal growth
- Diverse learning experiences

Pupil Development:

Strong emphasis on pupil voice

- Encouraging independence and self-reliance
- Fostering empathy and respect
- Building courage to face challenges
- Nurturing curiosity and love for learning
- Supporting holistic personal growth





About Us:

- 30 pupil intake
- One form entry
- School day – 8:45am – 3:15pm
- Wrap around care through Jay Jays – (Transitioning to Lowercroft in September 2025)



Lowercroft Primary School



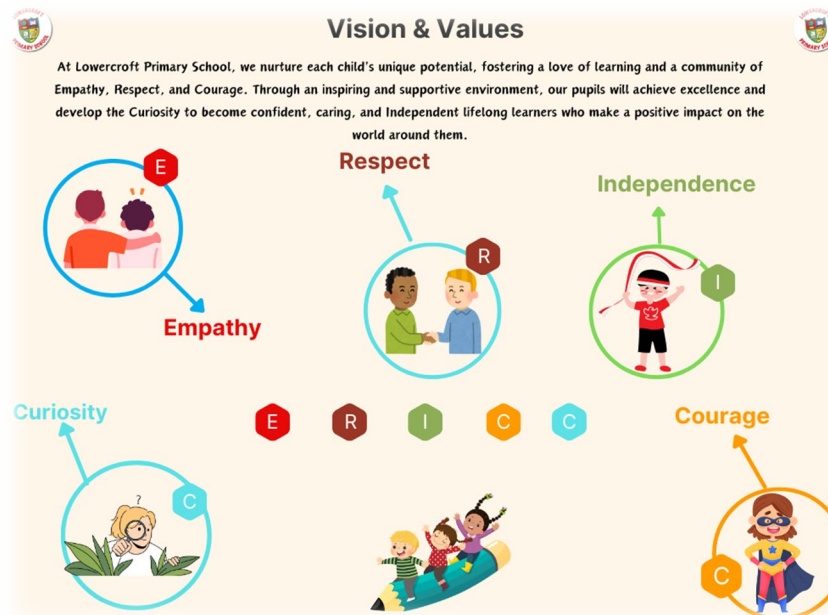


Pupil Charter

Vision & Values

Personal Development

Lessons



Curriculum

Extra Curricular Activities



Lowercroft Primary School



Our Pupil Charter

Grow something you will eat



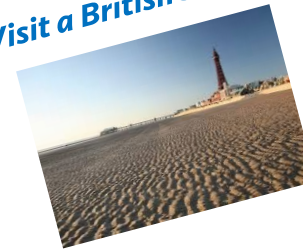
Learn that effort reaps rewards



Perform in front of a live audience



Visit a British seaside



Develop a sense of adventure and courage



Have muddy days in Forest School



Take responsibility for caring for the world



Stay away from home for at least one night



Represent your school



Develop a sense of pride in yourself and where you live



Develop and maintain friendships



Raise money for a worthy cause *See your artwork displayed in a gallery*



This is our promise to you...all you have to do is take the opportunity.



Lowercroft Primary School



The Lowercroft Curriculum

How do we Inspire, Challenge and Support our children?

- Meets the needs of all learners regardless of ability
- High expectations
- Exciting, relevant and bring learning to life
- Visitors, visits, whole school trips, residential in Y2, 4 and 6
- Knowledge & skills acquisition
- Transferable skills across other areas of the curriculum
- Teach how to be a good citizen to make positive contributions to society
- Values: Empathy, Respect, Independence, Courage, Curiosity
- No curriculum narrowing.
- Offer enrichment within and beyond the school curriculum
- Supports wellbeing and positive mental health



Lowercroft Primary School



Early Years Foundation Stage (EYFS)

- We have a highly experienced team
- We build strong relationships with our families
- We provide a nurturing place for your child to flourish
- We treat each child as an individual and take time to get to know them
- We have lots of fun as we learn
- We have high expectations of our staff and our children
- We love our Year 6 Buddies!



Early Years Foundation Stage (EYFS)

Children in the Early Years learn by playing and exploring, being active, and through creative and critical thinking which takes place both indoors and outside.

We follow the Early Years Foundation Stage curriculum which is made up of seven areas of learning, which are important areas which build the foundations for all other learning.

- Personal, Social and Emotional Development
- Communication and Language
- Physical Development
- Maths
- Literacy
- Understanding the World
- Expressive Arts and Design



These areas of learning are reflected in our Reception environment.

- Lots of our learning is linked to, and follows, the children's interests and there is a balance of child-initiated and adult-led learning.
- Children explore, create and learn through play and the provision of exciting, stimulating, interactive and accessible resources and opportunities.

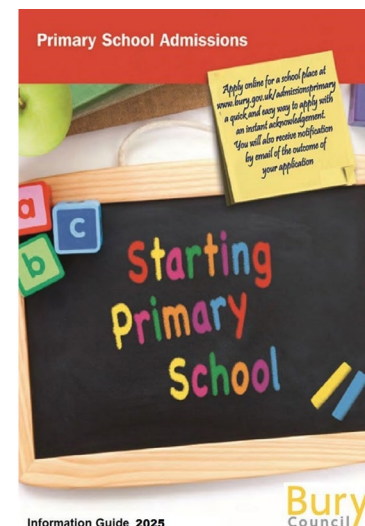


Lowercroft Primary School



Next Steps

- Speak to parents in the local community who have children already in school
- Visit all schools in your area
- Ensure they align with your own vision and ethos
- Choose three schools
- Follow the Bury Admission guidance
- Complete form by midnight 15th January 2025
- Notification letters will be posted out on 16th April 2025



Guidance:

<https://www.bury.gov.uk/schools-and-learning/school-admissions/primary-school>



Lowercroft Primary School





DISCOVER MORE ▾

Questions

Contact us:

Tel: 0161 -761-2798

Email: Lowercroft@bury.gov.uk

Lowercroft Primary School

